

DPTO 411

sup. m ²	útil	efectiva
interior	85.56	85.56
terracea/logia	5.72	14.88
total	91.28	100.44

m² ambientes

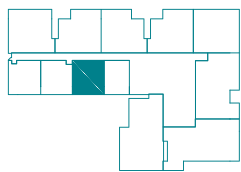
4° Piso | Acceso

1	Living	3.92 x 3.34
2	Comedor/Cocina	2.60 x 5.34
3	Logia	1.70 x 1.45
4	Terraza	4.63 x 1.50

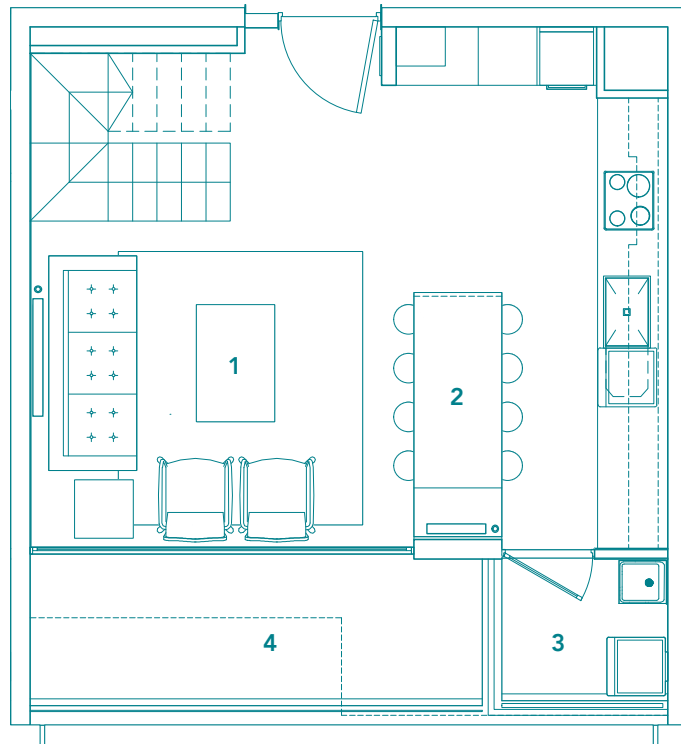
5° Piso | Nivel superior

5	Dorm. Principal	3.13 x 3.82
6	Walk-in closet	3.29 x 2.02
7	Baño principal	3.29 x 1.40
8	Terraza	3.14 x 0.85
9	Dorm. 2	3.29 x 3.74
10	Baño 2	3.15 x 1.40

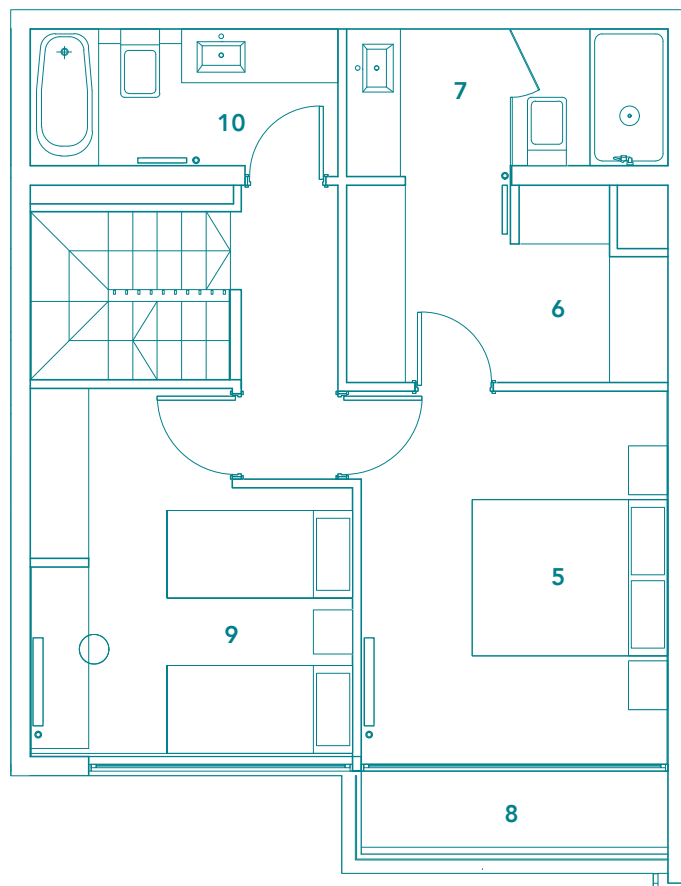
Orientación Sur



4° PISO



5° PISO



411

MAR JÓNICO

DPTOS DUPLEX - VITACURA